

2010 price list

M1 MELAMINE FOAM SE 50M1-MELAMINE ELASTO-CELL

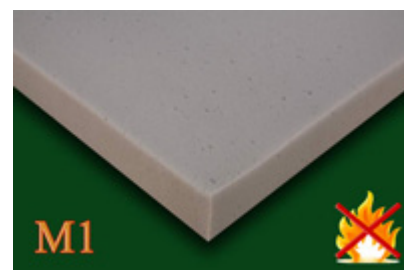
Technical data sheet

SE50 M1-MELAMINE Elasto-Cell is a light and flexible melamine foam, which is appreciated for its acoustic absorption qualities (open cell structure), as well as for its chemical agent and M1 fire resistance (non flammable product).

Because it is light, easy to cut and aesthetically pleasing, it can be considered as a prime reference in the building sector, as well as in the industrial environment.

| | | |
|---|--|---------------------------------|
| Structure: | White/grey melamine | |
| Density: | 8 up to 11 Kg/m ³ | IN ISO 845 |
| Compression pressure 10 %: | 4-20 KPa | DIN 53421 |
| Traction resistance : | 120 up to 180 KPa | ISO 1798 |
| Elongation at break: | 16 up to 29 % | ISO 1798 |
| Thermal conductivity: | ≤0.035 W/mK | (λ _{10°C} / t = 50 mm) |
| Continuous use temperature: | 180°C (<u>Foam only</u>) | |
| Fire behavior: | M1 (<u>without adhesive</u>) 94 V-O B1 | NF P92-501 UL94 DIN 4102 |
| Sound absorption ratio D=50 mm / f-2,000 Hz D=40 mm / f-2,000 Hz | >90% | DIN 52215 DIN 52212 |

SOLUTIONS ELASTOMERES FOAMS: SYNONYMOUS WITH SIMPLICITY & EFFICIENCY!



2010 price list

SE 50M1-MELAMINE MELAMINE FOAM

| | | |
|-------------------------|-------------------------------|---|
| Material: | White/grey melamine foam | M1 classification (<u>without adhesive</u>) |
| Dimensions: | 1,250 x 1,250 mm | |
| Total thickness: | 50 mm | |
| Adhesive: | On one side (easy to lay) | |
| Average gain*: | Low-pitched (100-400Hz) | = 16.84 dB |
| | Medium (400-2,000Hz) | = 36.20 dB |
| | High-pitched (2,000-10,000Hz) | = 50.16 dB |

*Average gain measured (metal plate, thickness 1mm + foam)

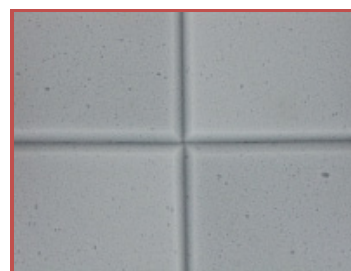
| | |
|----------------------|--|
| Applications: | Fire behavior and temperature resistance require good performances everywhere: public places, heating systems, buildings, roller shutters... |
| Key points: | M1 fire classification, lightness (but also fragility) Great acoustic efficiency |

| | | |
|--|--------------------------|---------------------------|
| Large sizes: (1,250x1,250mm) | For 1 box (24 plates): | 64.00 €* per plate |
| | For 2 boxes (48 plates): | 53.45 €* per plate |

Chamfer (optional) 5x5mm = 4.00 €* for a 1,250x1,250mm plate
(on the plates' outline)



Lateral view (plates with chamfers)



Eye bird's view (4 plates with chamfers)

*All our tariffs are exclusive of tax