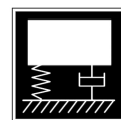




Pièces suivant plans



Étanchéité



Anti-vibratoire

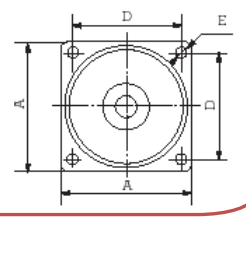
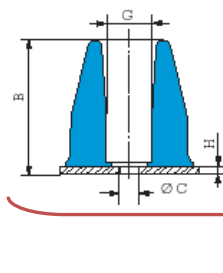
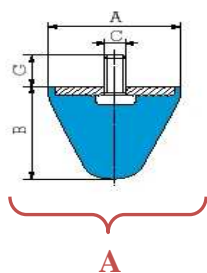


Acoustique

Technical data sheet

SE111B MOUNTING

Antivibratory range



Ref A	ØA (mm)	B (mm)	C	G (mm)	Frequent impacts			Occasional impacts Energy in joules
					Energy (joules)	Arrow (mm)	Reaction (daN)	
512251	25.5	19	M8	20	3	8	100	9
512307	30	30	M8	25	6	15	140	18
512301	30	30	M6	13.5	6	15	140	18
512515	50	50	M10	25	30	25	340	90
512501	50	50	M8	20	30	25	340	90
512516	50	64	M10	25	40	32	370	120
512502	50	64	M8	35	40	32	370	120
512517	50	58	M10	25	37	28	400	110
512503	50	58	M8	15	37	28	400	110
512608	60	40	M10	25	27	18	550	70
512601	60	40	M14	62	27	18	550	70
512700	72	58	M10	25	50	26	550	150
512721	72	58	M12	30	50	26	550	150
512951	95	80	M16	45	120	37	1,100	350

Ref B/ Hardness	ØA (mm)	B (mm)	ØC	D (mm)	ØE (mm)	G (mm)	H (mm)	Frequent impacts			Occasional impacts Energy in joules
								Energy (joules)	Arrow (mm)	Reaction (daN)	
514085/60	85	85	8.5	69	8.5	20	5	170	40	1,200	500
514085/75	85	85	8.5	69	8.5	20	5	280	40	1,700	850
514110/60	110	110	12.5	90	8.5	30	6	330	50	1,800	1,000
514110/75	110	110	12.5	90	8.5	30	6	550	50	3,400	1,500
514130/60	130	130	19	106	11	40	6	600	65	2,800	1,800
514130/75	130	130	19	106	11	40	6	650	60	3,000	1,900
514160/60	160	160	23	132	11	45	8	1,050	75	4,500	3,000
514160/75	160	160	23	132	11	45	8	1,300	70	6,000	3,900
514200/60	200	200	28	168	13	60	10	1,200	90	4,000	3,600
514200/75	200	200	28	168	13	60	10	2,200	85	7,800	6,600